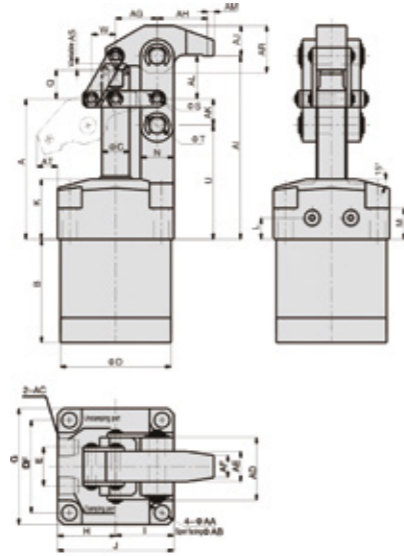


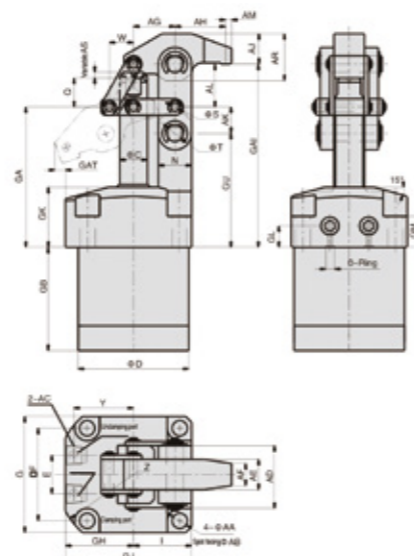
CLF5H-HYDRAULIC LEVERAGE CLAMP



LINE TYPE



MANIFOLD TYPE



FEATURES

Operate conveniently, this series products design with connecting rod structure, at the time of termination holding state, clamping arm can be put lower than holding position, and reduce the interference with loading and unloading operation.

Clamping arm of the products is very flexible. It can holding more capacity than swing clamp and leverage clamp, and can reduce the interference of the surrounding equipment, so it can save working space.

Product with special dustproof design and high sealing, can prevent the cutting chips and coolant to infiltration. So it can be used in more severe conditions.

NOTE

The practical clamping force is 60%-70% of theoretical clamping force. High temperature oil seals are available on request.

Max: operating pressure 70 bar
Min: operating pressure 5 bar

ORDERING INDICATION

CLF5H - 32 G

CLF5H	Series	CLF5H
32	Hydraulic cylinder inside diameter	φ25, φ32, φ40, φ50
G	Port type	Blank: line type G: Manifold type

Unit:mm

MODEL	CLAMPING FORCE AT 70 bar (KN)	CLAMPING STROKE(mm)	TOTAL STROKE(mm)	OIL CAPACITY CLAMP(cm ³)	OIL CAPACITY UNCLAMP(cm ³)	EFF.PISTON AREA CLAMP(cm ²)	EFF.PISTON AREA UNCLAMP(cm ²)	RANGE OF TEMPERATURE(°C)
CLF5H-25	2.90	31.5	34	16.694	11.458	4.91	3.37	-10~+70° C
CLF5H-32	4.41	35.5	38	30.552	25.08	8.04	6.60	-10~+70° C
CLF5H-40	7.09	41	44	55.264	46.464	12.56	10.56	-10~+70° C
CLF5H-50	11.36	47	50	98.15	82.45	19.63	16.49	-10~+70° C

MODEL	A	B	C	D	E	F	G	H	I	J	K	L	M	N	Q	S	T	U	W	AA	AB	AC	AD	AE	AF	AG	AH	AI	AJ	AK	AL	AM	AR	AT
CLF5H-25	70	59.5	14	47	21	40	50	25	25	50	30.5	11.5	13.5	12	12	4	6	56.5	13	5.5	9.5	PT1/8	22	12	8	19	23	88	13	13.5	18	4	20	12
CLF5H-32	75	70.5	14	55	21	47	59	29.5	29.5	59	30.5	11.5	15.5	16	14	5	8	60	13	6.6	11	PT1/8	28	16	12	21.5	28	95	15	15	20	4	23	11
CLF5H-40	89.5	79.5	16	65	25	55	69	34.5	34.5	69	37.5	13.5	20.5	20	20	6	10	72	16	9	14	PT1/4	36	19	14	24.5	31	117.5	18	17.5	28	4	28	18
CLF5H-50	101.5	86.5	20	80	28	67	84	42	42	84	43.5	15.5	22.5	24	21	6	12	83	17.5	11	18	PT1/4	42	22	16	30	37	132.5	22	19	31	4	34	15

MODEL	GA	GB	C	D	E	F	G	GH	I	GJ	GK	GL	GM	N	Q	S	T	GU	W	O-RING	Y	Z	AA	AB	AC	AD	AE	AF	AG	AH	GAI	AJ	AK	AL	AM	AR	GAT
CLF5H-25G	70.5	59	14	47	21	40	50	35	25	60	31	12	18	12	12	4	6	57	13	S4	29	39	5.5	9.5	PT1/8	22	12	8	19	23	88.5	13	13.5	18	4	20	2
CLF5H-32G	75.5	70	14	55	21	47	59	37.5	29.5	67	31	12	17	16	14	5	8	60.5	13	S4	32	43	6.6	11	PT1/8	28	16	12	21.5	28	95.5	15	15	20	4	23	3
CLF5H-40G	90	79	16	65	25	55	69	45.5	34.5	80	38	14	21	20	20	6	10	72.5	16	S4	37	51	9	14	PT1/4	36	19	14	24.5	31	118	18	17.5	28	4	28	7
CLF5H-50G	102	86	20	80	28	67	84	51	42	93	44	16	23	24	21	6	12	83	17.5	S5	44	57	11	18	PT1/4	42	22	16	30	37	133	22	19	31	4	34	6